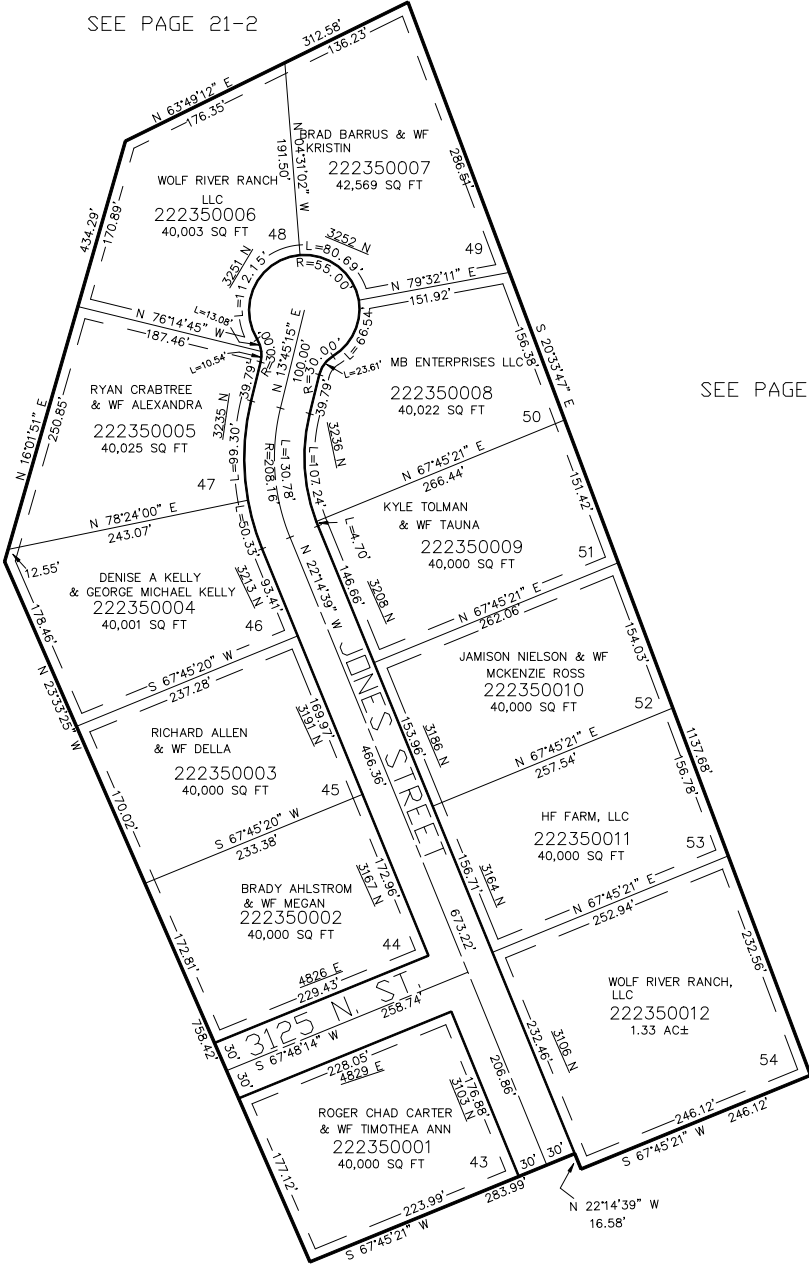


PART OF THE NW.1/4, OF SECTION 27, T.7N., R.1E., S.L.B. & M.  
**MOUNTAIN VIEW ESTATES No. 9**

IN WEBER COUNTY  
SCALE 1" = 100'

TAXING UNIT: 28

SEE PAGE 21-2



SEE PAGE 21-2

SEE PAGE 21-2

10' UTILITY & DRAINAGE EASEMENTS EACH SIDE OF PROPERTY LINES AS INDICATED BY DASHED LINES EXCEPT AS OTHERWISE SHOWN.

FOR COMPLETE ENG DATA SEE ORIGINAL DEDICATION PLAT IN BOOK 61, PAGE 67 OF RECORDS.

SEE PAGE 216